

# BARAUSSE









Barausse develops and manufactures  
**doors, partitions and wall paneling**  
designed to make the living environment  
sublime. Barausse products are the result  
of a strong handcrafted tradition  
in woodworking combined with  
technical skills and a proactive approach.



[company video](#)

**“Making the living environment sublime,  
sculpting a design that enhances  
the functionality, applying the knowledge  
and experience of our team to pursue beauty:  
we seek the unquestionable aim of creating  
a system of products that improves the quality  
of living and enhances the value of the project.”**











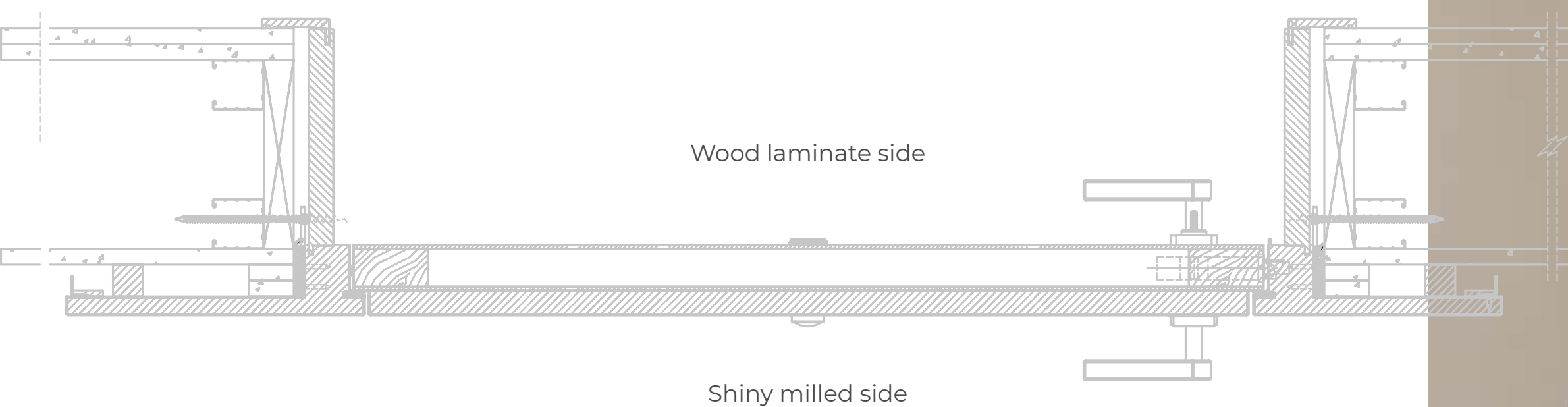




## Fire rated doors

Fire rated doors are classified based on **international safety standards** and approved according to the regulations in force in:

- **UNI EN** | Europe
- **UL** | United States of America
- **VKF** | Switzerland



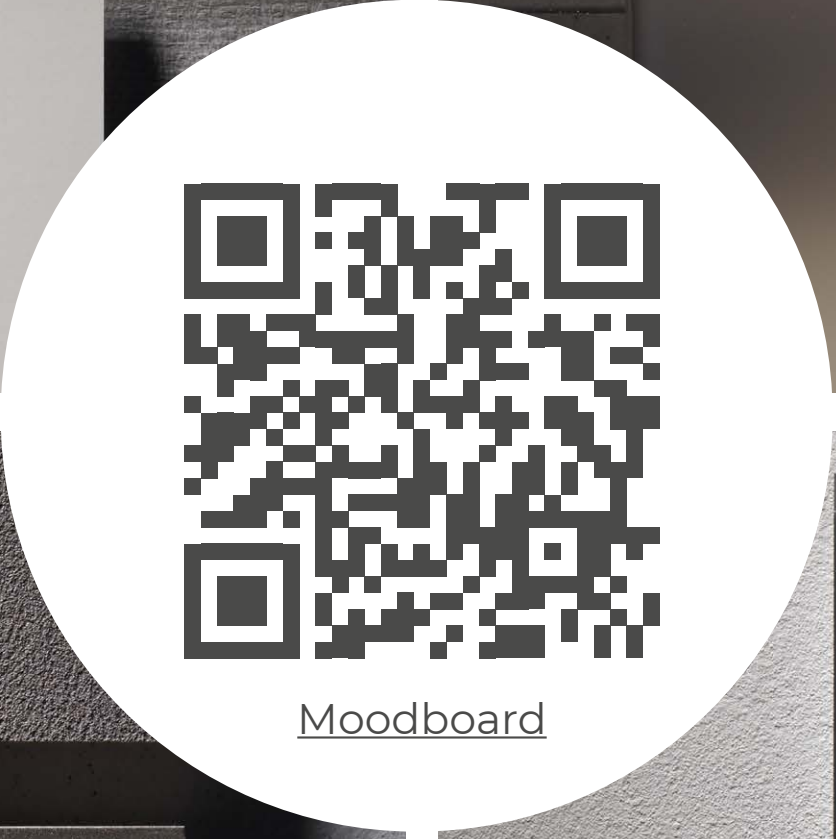






Moodboard







Continuity



## Continuity System

**BARAUSSE**

Continuity represents a natural transition from the “door system” to the expansion of **integrable products**, including sliding systems, partitions, walk-in closets, equipped walls and pivoting doors. The system confirms the company’s mission: to develop and supply customizable solutions, meeting the increasingly high expectations deriving from Made in Italy products.





# CASA BARAUSSE

“A visual project which adopts  
a concrete interpretation  
of sustainable living philosophy”



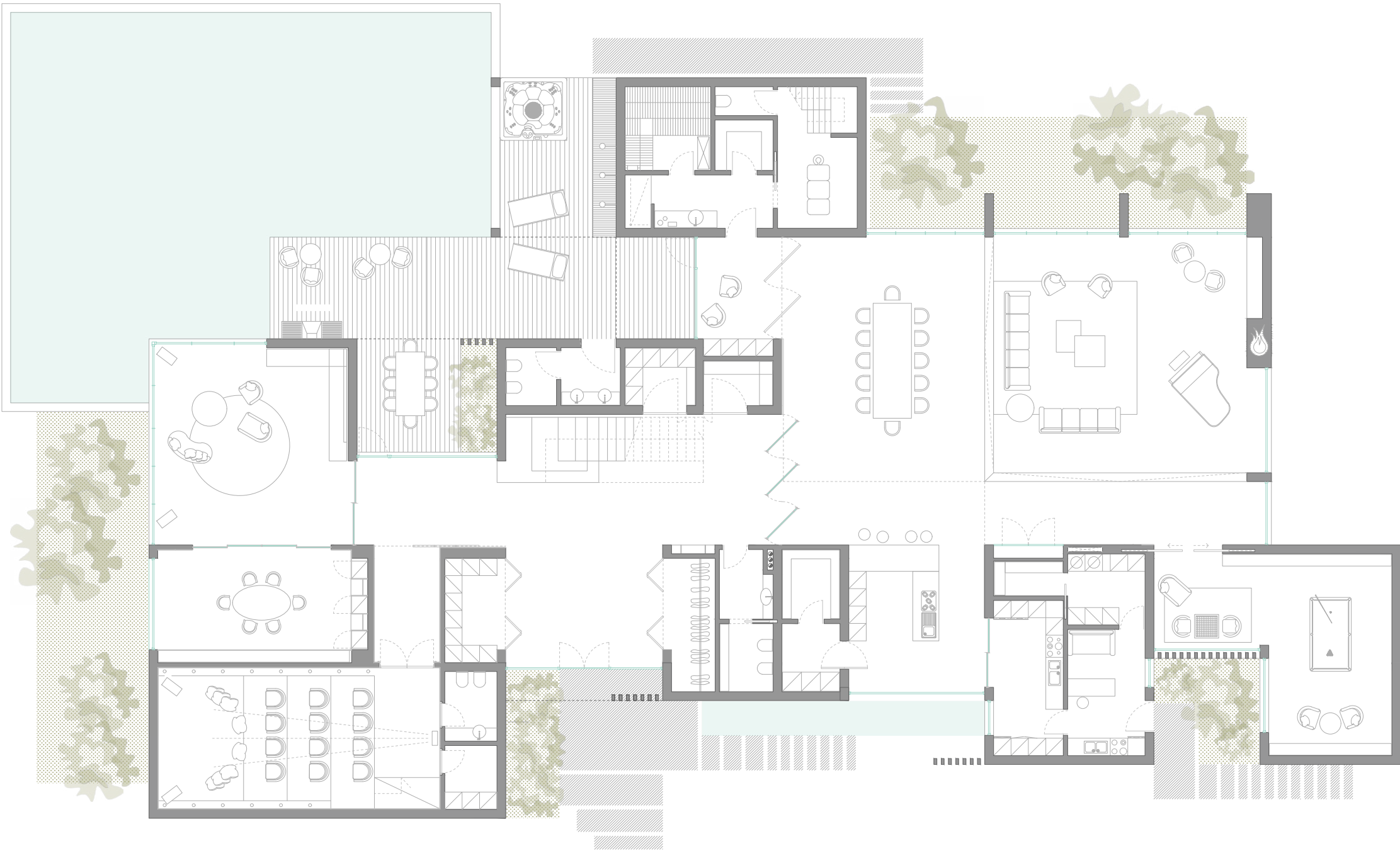


An abstract composition of various material samples arranged in a layered, geometric fashion. The samples include a large piece of light-colored wood with a horizontal grain, a dark wood sample, a black marble sample with white veins, a light gray square, a dark gray square, a brown textured fabric sample, and a dark brown textured fabric sample. The samples are set against a background of light gray and dark gray textured surfaces.

“We combine the warmth of wood  
with the neutral shade of aluminium  
to create sophisticated environments”



The clear-cut structure echoes the magnificence of modernism with a contemporary twist, combining the shapes and hues of nature with the essential geometry of the architectural style. The ground floor layout is the outcome of the perfect fusion of architecture and landscape, precisely the large, smooth surfaces reflecting sunlight, and the large windows offering scenic views of water and surrounding vegetation. An open plan, developed in an additive and harmonious manner to meet the needs of contemporary man, according to the Barausse philosophy



Piano Terra  
Ground Floor



The top floor is, instead, organised according to user needs, with particular focus on personal care areas. A comprehensive, person-centred project, which restores Barausse vision of living. An harmonious environment studied down to the smallest detail, with a continuous flow of furniture, doors and panelling, to please the eye and convey a feeling of well-being.



Piano Primo  
First Floor







# Material & Finishes



## **Wood**

The kind of style which derives from use of a natural, unique material as wood is, makes any product incomparable and evergreen.



### **Lacquered**

For a lively and bright style,  
the lacquered doors are available  
in an extensive colour range.

The finish is achieved with  
water-based paints, fully respecting  
both the environment and health.



## **Clay**

This natural contemporary finish offers the opportunity to create a new poetic concept for your spaces. They are the result of a careful selection of clays and quartz in aqueous emulsion, underpinned by a profound respect for both the material and health.



## **Carrara**

The precious marble from the Apuan Alps, revisited with an ethical and sustainable approach. Carrara marble powder is recovered and mixed with a blend of quartz and clay in aqueous emulsion. The innovative product features a natural visual effect and unique material characteristics.





## **Glass**

Simple, customized by colors, optical effects or embellished with internal mesh and fabrics, glass door can make the space brighter and more spacious.

Barausse uses only compliant safety glass UNI EN 12600.



## Metal

The craftsmanship and oxidation processes implemented by De Castelli elevate the metal to the center of a completely renewed design scene where the finishes, unique and exclusive, convey strongly material sensations and suggestions.

in partnership with

**D<sup>E</sup>CASTELLI**



# Metalsphere

in partnership with

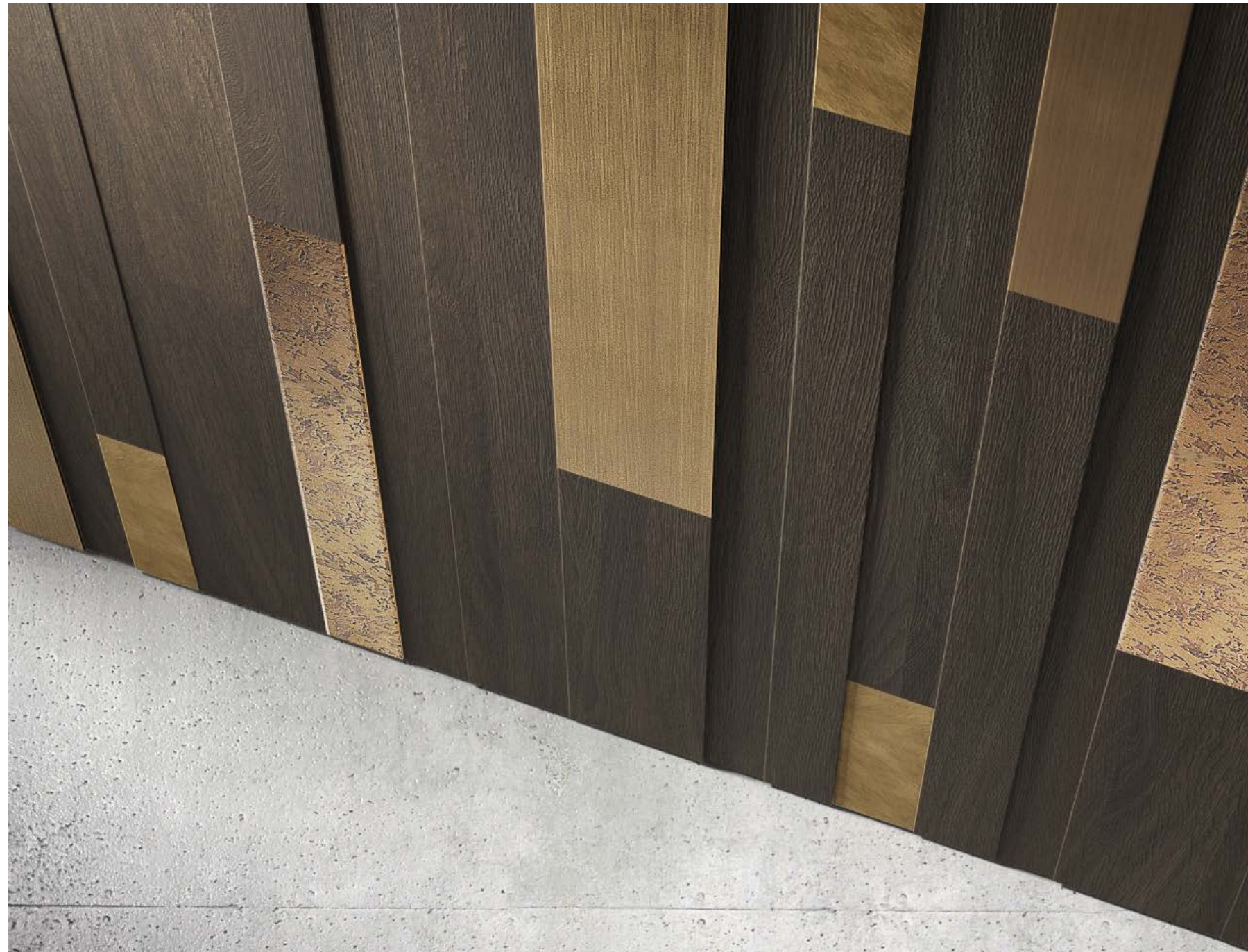
**D<sup>E</sup>CASTELLI**



## Metalsphere

**BARAUSSE**

The concept of **industrial tailoring** brings Barausse and De Castelli together in an experience that promotes their respective expertise and creates a product that celebrates the unparalleled artistry of **Italian craftsmanship**. This showcases their manufacturing capabilities and determination to push beyond the limits, in constant pursuit of **beauty** and **innovation**. The result is a collection of doors which is the perfect combination of **wood and metal**, for an exclusive luxurious and contemporary aesthetic result.

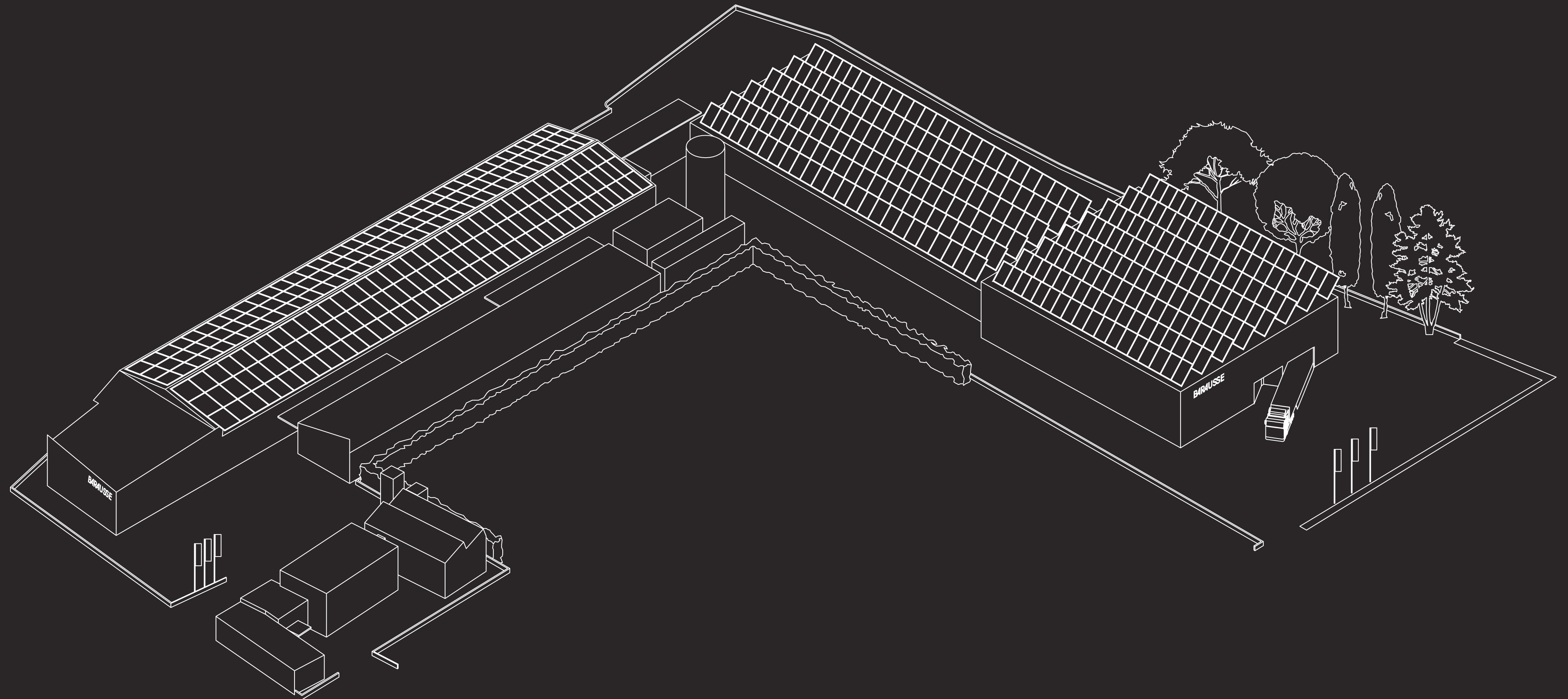




About us



# Designed and Manufactured in Italy





We strive for our Values

**BARAUSSE**



---

We dare to innovate everyday

---

---

A team that's passionate and inclusive

---

---

Sustainability as leading concept for social responsibility

---

---

B - inspired and B - curious

---

---

We produce local, sell worldwide

---







Ethic and Aesthetic

All our product lines are made in compliance with **quality** parameters and specific **environmental protection** and **health safety certifications**. All our doors are made of low formaldehyde emission panels, compliant with the CARB2 / TSCA title VI standard. Decorative elements are free of toxic substances and **FSC® certified**. Paints are water-based and gluing which is made only with vinyl glues that are formaldehyde free.

BARAUSSE



Certified wood



Health and safety

Green Soul



Water-based varnishig



90%

Recyclable materials used



80%

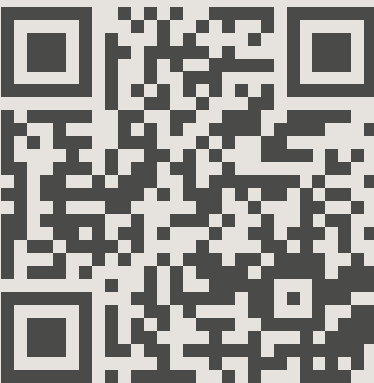
Solar energy



95%

Thermoheat energy

[sustainability](#)





A single interlocutor who takes care of the supply of the door in every phase of the project management process. From the conception of the project, to the supply of the product.

1

Analysis of the project and requirements

2

Product engineering & Shop drawings

3

Attentive choice of packaging

4

Personalized labels

5

Traceability

6

Assistance & quick management of unexpected construction sites incidents

[contract](#)





## Certified Company

**BARAUSSE**

### **UNI EN ISO 9001**

Quality management system

### **UNI ISO 14001**

- energy saving policies
- choice of renewable energy sources
- careful waste management
- minimization of production waste
- emissions control

### **UNI ISO 45001**

Health and safety management standard





Marketing



New graphic design for all the company’s online and offline tools to strengthen and declare **brand positioning decisively**. The communication tools also reflect the design of the products themselves, suggesting a **new modern** and **refined style** of living in relation to the environment surrounding. Product systems to improve the quality of life and give a **touch of originality** and value to the project.

D'ECATELLI

METALSPHERE

BARAUSSE

Metalsphere

↓

Continuity

BARAUSSE

Continuity

↓

Glass doors & partitions

BARAUSSE

Vetro e Alluminio

↓

The Culture of Project

BARAUSSE

Contract

↓

Stylebook

BARAUSSE

Stylebook

↓

Secret

BARAUSSE

Secret

↓

FEEL

BARAUSSE

Feel

↓

Consegna Rapida

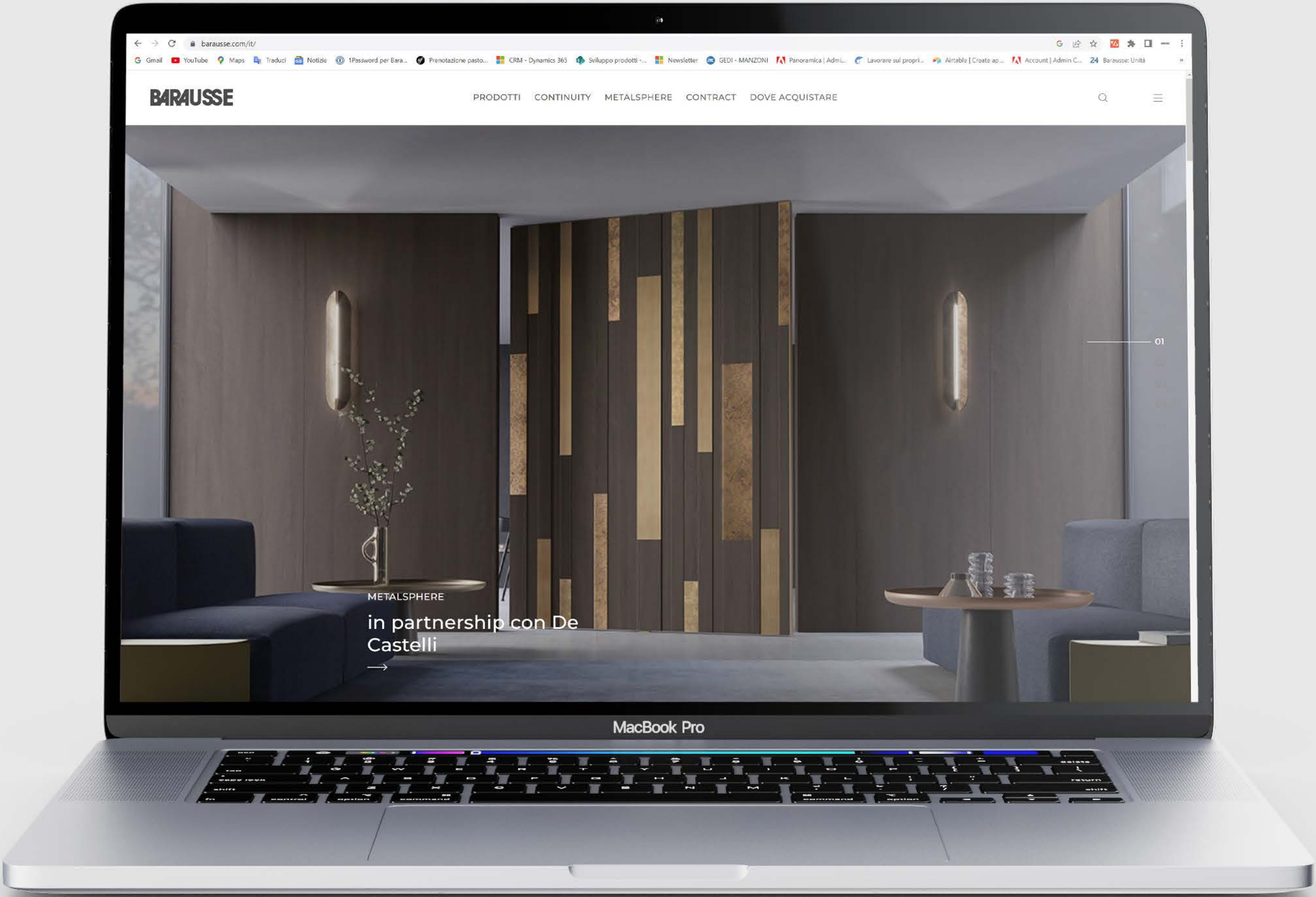
BARAUSSE

Consegna rapida

↓







[Barausse.com](https://www.barausse.com)



[Facebook](#)



[Instagram](#)



[Youtube](#)



[Linkedin](#)



[Pinterest](#)