

**fast delivery  
solutions**





### **FAST DELIVERY**

A selection of doors available in 5 days.



### **PERFORMANCE**

Leaf with a wide-section fir perimetric structure and a 6 mm HDF covering which ensure stability, impact resistance and solidity.



### **LOW-CARB COMPLIANCE**

Leaves and frames are manufactured with CARB2 HDF/ TSCA Title VI (Low emission of formaldehyde) Glueing is with vinyl glues (without formaldehyde emission).



### **CUSTOMIZATION**

made-to-measure in the range from 200 to 240 cm.



### **SOUNDPROOF SOLUTIONS**

Standard honeycomb-core door ensures acoustic performance up to 22 dB.



### **DETAILS**

The leaf edges are finished on the 4 sides.



### **RESISTANCE**

Suitable for humid spaces.  
Recommended for public spaces.



### **DESIGN**

Standard invisible hinges adjustable on 3 axes.



### **COORDINATES**

Skirting boards and design handles are available.



SECRET  
PAINTABLE LEAF



SECRET  
WHITE LACQUERED LEAF



hinged door    sliding door

**LEAF:** "You" leaf with paintable base layer;  
**FRAME:** Secret3 aluminum white pre-varnished paintable frame;  
**HARDWARE KIT:** matt chrome hardware kit with ST311 Simonswerk invisible hinges and magnetic lock;  
**SIZES AVAILABLE** W 60/70/75/80/90 x h 200 ÷ 240 cm  
**ACOUSTIC PERFORMANCE** 22 dB;  
**MADE-TO-MEASURE (200 ÷ 240 cm)**



ST311 hinge    Secret frame



hinged door    sliding door

**LEAF:** Blanc ON white lacquered leaf;  
**FRAME:** Secret3 aluminum white pre-varnished paintable frame;  
**HARDWARE KIT:** matt chrome hardware kit with ST311 Simonswerk invisible hinges and magnetic lock;  
**SIZES AVAILABLE** W 60/70/75/80/90 h 200 ÷ 240 cm  
**ACOUSTIC PERFORMANCE** 22 dB;  
**MADE-TO-MEASURE (200 ÷ 240 cm)**



ST311 hinge    Secret frame



FEEL PLUS  
WHITE LACQUERED



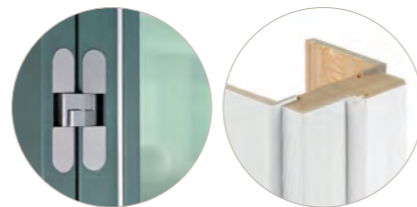
TN PLUS  
WHITE LACQUERED



hinged door sliding door

**LEAF:** Blanc ON honeycomb leaf;  
**FRAME:** blockboard Feel Plus frame with plywood telescopic Feel Plus architraves;  
**HARDWARE KIT:** silver finish hardware kit, Ecli3.0 invisible hinges;  
**SIZES AVAILABLE** W 60/70/75/80/90 x h 200/210 cm  
**ACOUSTIC PERFORMANCE** 22 dB.

**LEAF:** Blanc RVU leaf with security white satin glass;  
**FRAME:** blockboard Feel Plus frame with plywood telescopic Feel Plus architraves;  
**HARDWARE KIT:** silver finish hardware kit, Ecli3.0 invisible hinges;  
**SIZES AVAILABLE** W 70/80 x h 210 cm.



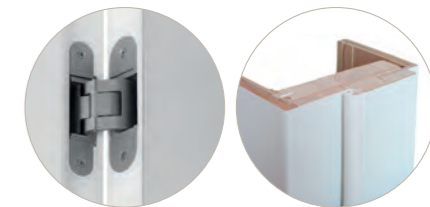
cerniera Ecli3.0 telaio Feel Plus



hinged door sliding door

**LEAF:** Blanc ON honeycomb leaf  
**FRAME:** TN Plus frame in wooden fir blockboard with plywood architrave;  
**HARDWARE KIT:** matt chrome finish hardware kit, with ST311 Simonswerk invisible hinges;  
**SIZES AVAILABLE** W 60/70/75/80/90 x h 200 ÷ 240 cm  
**ACOUSTIC PERFORMANCE** 22 dB;  
**MADE-TO-MEASURE (200 ÷ 240 cm).**

**LEAF:** Blanc RVU leaf with security white satin glass;  
**FRAME:** TN Plus frame in wooden fir blockboard with plywood architrave;  
**HARDWARE KIT:** matt chrome finish hardware kit, with ST311 Simonswerk invisible hinges;  
**SIZES AVAILABLE** W 70/80 x h 210 cm



ST311 hinge TN Plus frame



**FEEL PLUS  
PERLA - WOODEN EFFECT**



hinged door    sliding door

**LEAF:** Perla ON leaf honeycomb;  
**FRAME:** blockboard Feel Plus frame with plywood telescopic Feel Plus architraves;  
**HARDWARE KIT:** silver finish hardware kit, Ecli3.0 invisible hinges;  
**SIZES AVAILABLE** W 60/70/80/90 x h 200/210 cm;  
**ACOUSTIC PERFORMANCE** 22 dB.

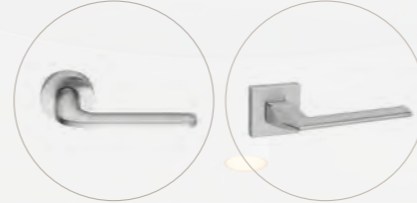
**LEAF:** Perla RVU leaf with security white satin glass;  
**FRAME:** blockboard Feel Plus frame with plywood telescopic Feel Plus architraves;  
**HARDWARE KIT:** silver finish hardware kit, Ecli3.0 invisible hinges;  
**SIZES AVAILABLE** W 70/80 x h 210 cm;



Ecli3.0 hinge    Feel Plus frame

## ACCESSORIES

### HANDLES FOR HINGED DOORS



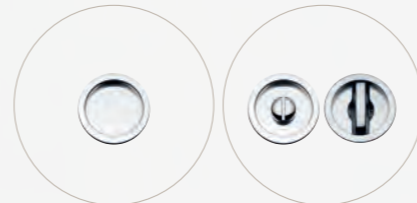
**Roboquattro**  
matt chrome

**Pura**  
matt chrome



**102**  
brushed  
stainless steel

### HANDLES FOR SLIDING DOORS



**Round A**  
matt chrome

**Round B**  
matt chrome



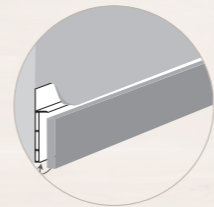
**Square A**  
matt chrome

**Square B**  
matt chrome

### SECURITY DOOR PANEL

matching internal panel available

### SKIRTING BOARD



kit of 5 rods (225 cm length) total ml 11

**Are you looking for doors in different sizes and finishes?  
Find them all in our catalogue**



 **BARAUSSE**

BARAUSSE S.r.l.  
via Parmesana, 27  
36010 Monticello Conte Otto (VI) Italy  
tel. +39 0444 900 000  
[www.barausse.com](http://www.barausse.com)  
[info@barausse.com](mailto:info@barausse.com)